



VIKING ARM

**A Professional Tool
For All**





Viking Arm

- New innovative hand tool
- Lift, Press, Tighten, Level, Support, Secure, Spread, etc.
- Capacity: up to 150 kg / 330 lb
- Controlled precision
- Engineered and assembled in Norway

Unique Lock & Release Mechanism

Controlled
Lowering

Full
Release

PATENTED



VIKING ARM

Position and Level Heavy Objects



VIKING ARM

High Productivity in Installation Works



VIKING ARM

Two-Man Job by One Person





**Save Time
and
Secure Quality**



VIKING ARM



Perfect Tool for Flooring



VIKING ARM

Precision and Control

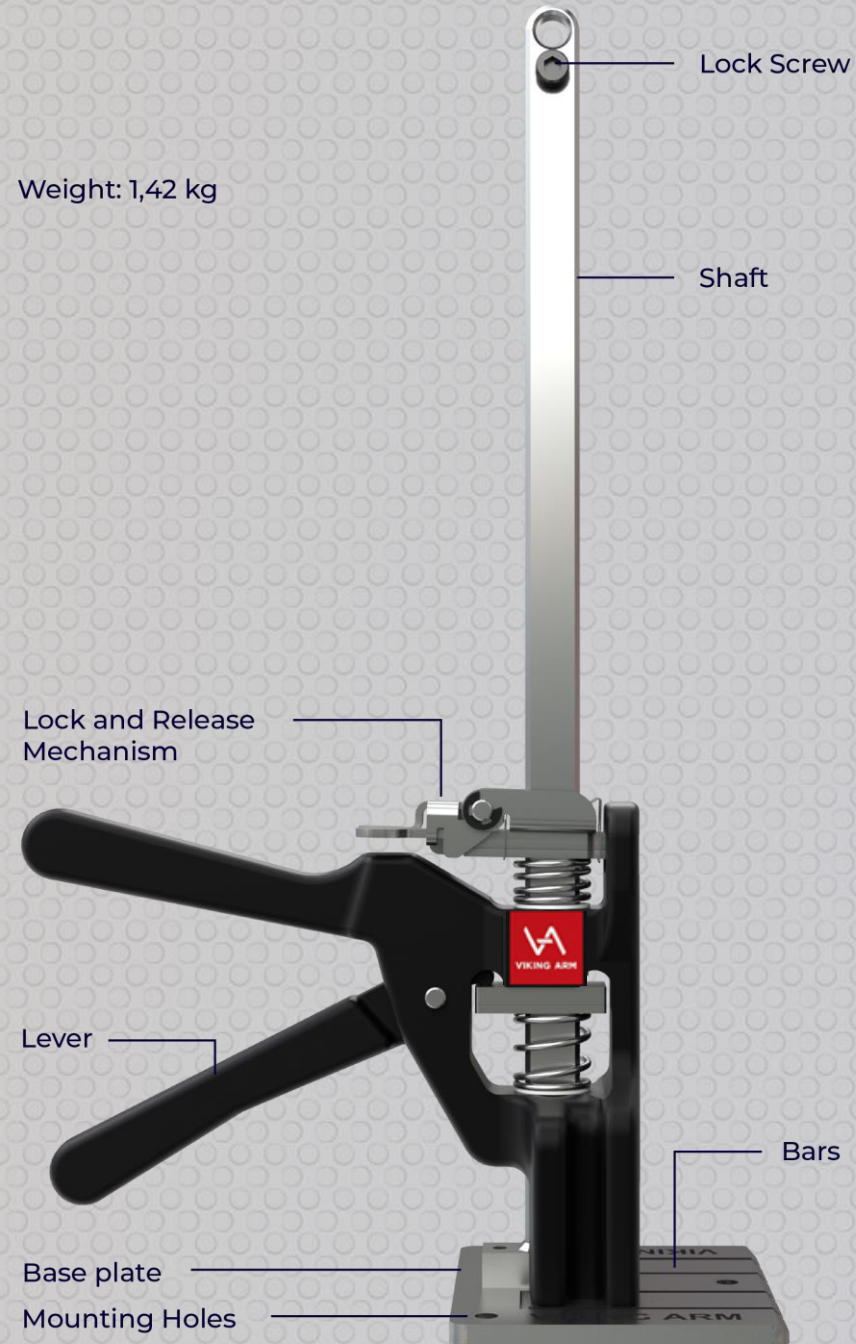


Use as a Clamping Tool



Overview

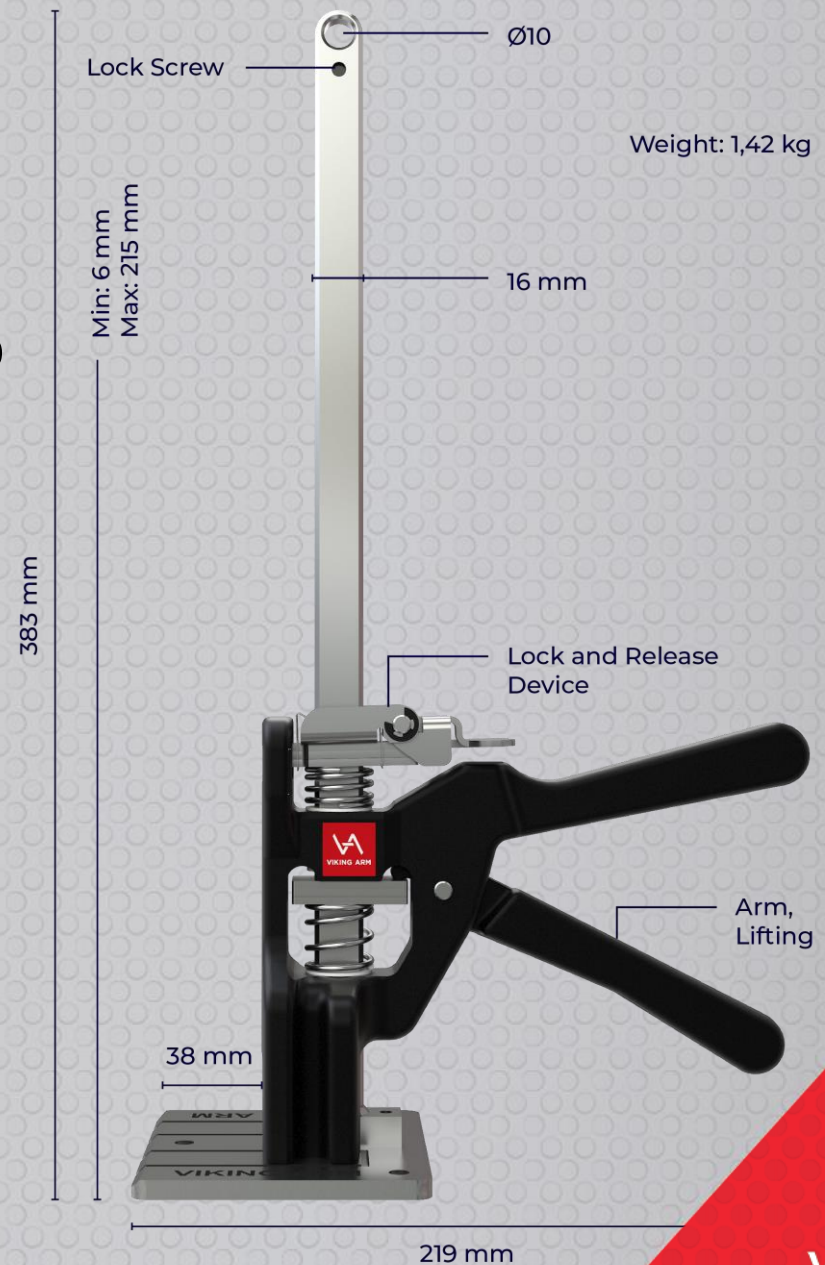
Weight: 1,42 kg



Key Specifications

- **Capacity:** up to 150 kg / 330 lb
- **Low weight:** 1,4 kg / 3,0 lb
- **Compact size (mm):** 383 x 219 x 87
- **Operation range (mm):** 7 → 215
- **Standard* base (mm):** 6 x 105 x 87

*Optional base (mm): 3 x 77 x 62



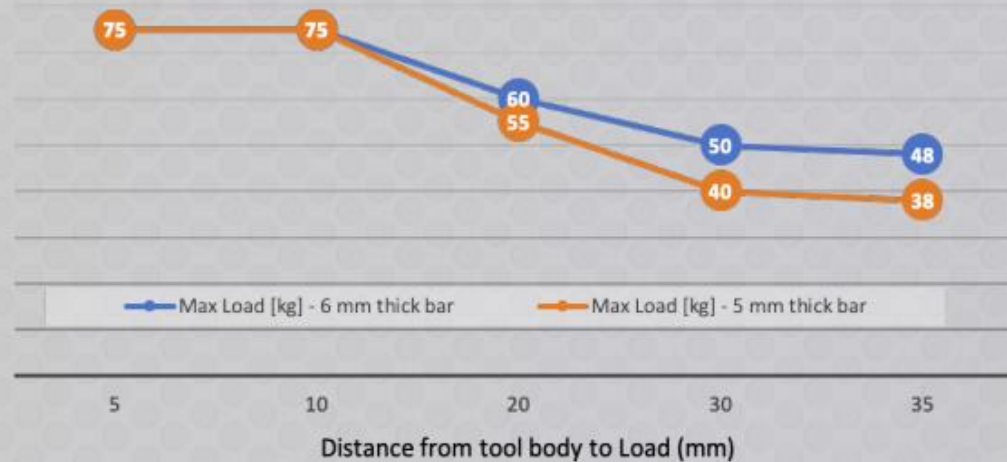
VIKING ARM

Load Diagram

Recommended maximum load equally distributed
on **both lifting bars**, kg



Recommended maximum load on **one lifting bar**, kg



VIKING ARM

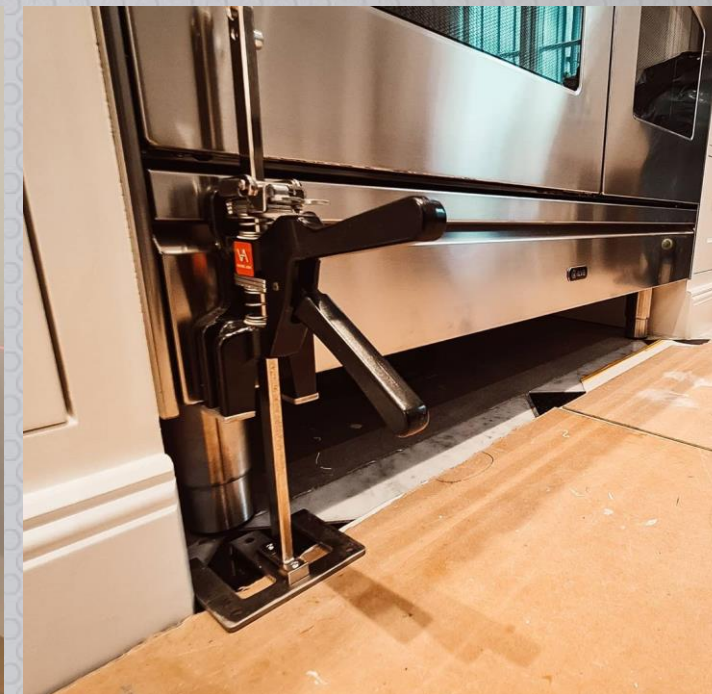
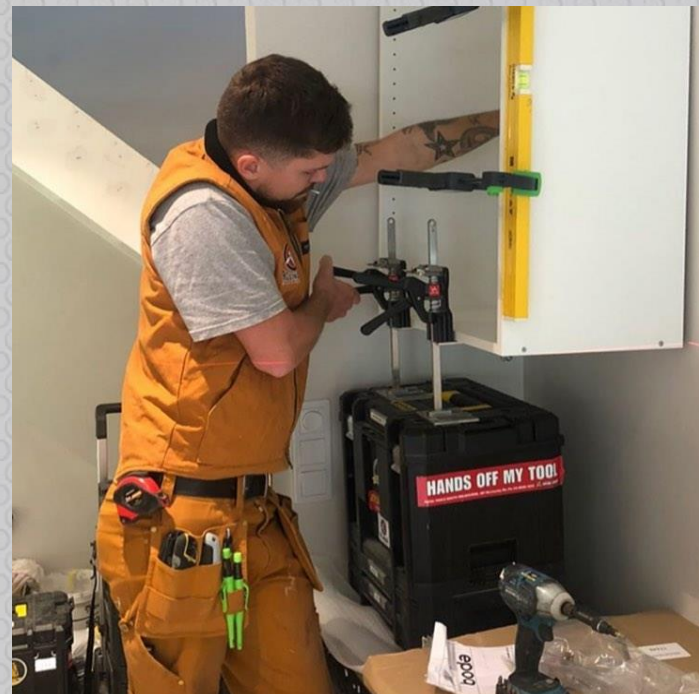
Quality

- Designed and built for professionals
- Absolutely no compromise on quality
- Sturdy and durable construction
- Components of highest quality
- Hardened stainless steel / aluminium
- Continuous development and improvement



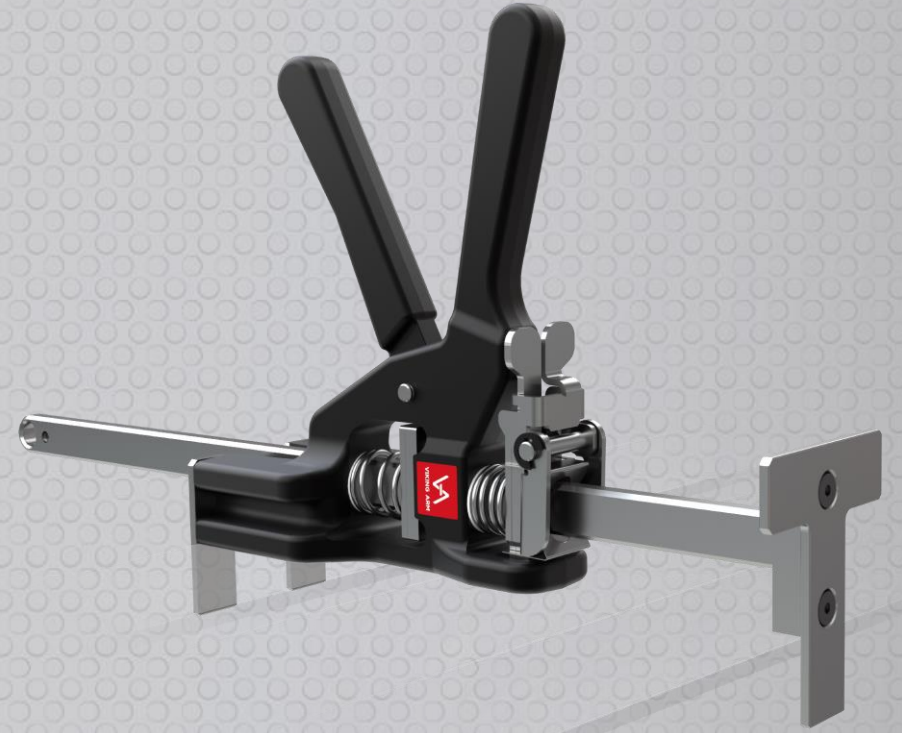
VIKING ARM

Inspires creativity



Advantages at a glance

- Impressive capacity for a compact hand tool
- Inspires creativity in various applications
- Universal tool - substitutes multiple “traditional” tools
- Saves time and money
- A “two-man” job done by one person
- Meets “social distancing” requirements
- Expensive and hard to copy



VIKING ARM



Voyage



VIKING ARM